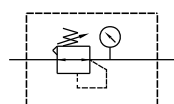
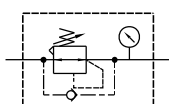


## TU - R2

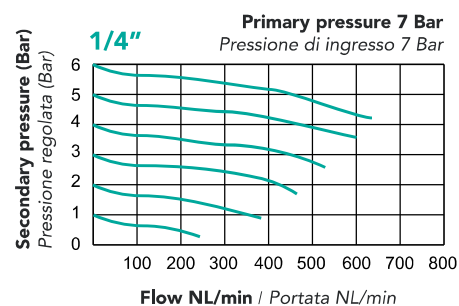
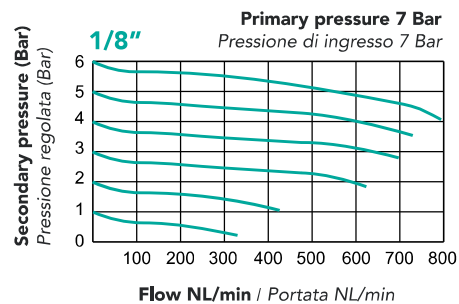
**PRESSURE REGULATOR**  
 REGOLATORE DI PRESSIONE


Standard / standard

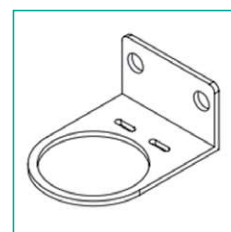


Backflow / flusso di ritorno

## FLOW / PORTATA



## Attachment / Accessori


**L-type bracket (TU-BL2)**  
 Staffa a L (TU-BL2)

**TECHNICAL FEATURES / CARATTERISTICHE TECNICHE**

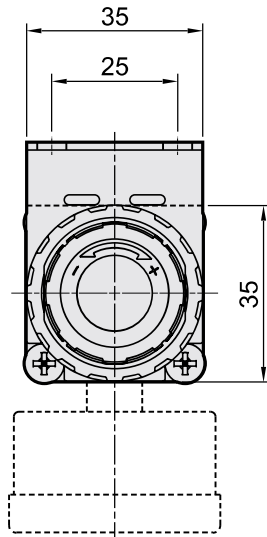
<b>Port size / Connessione</b>	G 1/4" G1/8"
<b>Fluid / Fluido</b>	Air / Aria
<b>Max. operating pressure</b> Range massimo di pressione	10 Bar
<b>Proof pressure</b> Pressione di scoppio	15 Bar
<b>Regulated pressure range</b> Range di regolazione di pressione	Version - Versione A: 0,5 ~ 2 Bar Version - Versione B: 0,5 ~ 4 Bar Version - Versione C: 0,5 ~ 8,5 Bar
<b>Ambient temperature</b> Temperatura ambiente	- 5 ~ +60°C (no freezing - no congelamento)
<b>Attachment / Accessori</b>	Pressure gauge, L-type bracket (TU-BL2) Manometro, staffa tipo L (TU-BL2)
<b>Weight / Peso</b>	190 g

**ENCODING / CODIFICA**

**TU - R2 -**  -

<p><b>Model</b> Modello</p>	<p><b>Port size:</b> Connessione <b>14</b> 1/4" <b>18</b> 1/8"</p>	<p><b>Backflow function:</b> <b>S</b> Standard <b>B</b> Backflow function <i>Funzione flusso di ritorno</i></p>	<p><b>Pressure range:</b> <i>Range di pressione:</i> <b>A</b> (0,5÷2 Bar) <b>B</b> (0,5÷4 Bar) <b>C</b> (0,5÷8,5 Bar)</p>	<p><b>Exhaust mechanism:</b> <i>Meccanismo di scarico:</i> <b>R</b> Relieving type <i>con relieving</i> <b>N</b> Non relieving type <i>senza relieving</i></p>
---------------------------------	--	---	---	--

**DIMENSIONS / DIMENSIONI**



**Panel mounting hole**  
*Foro per montaggio a pannello*

